

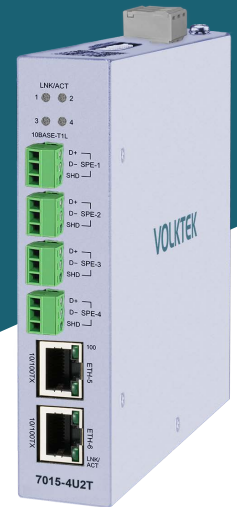
# 7015-4U2T-T1L

## Unmanaged 4 x 10BASE-T1L SPE & 2 x 10/100 RJ45 Industrial SPE Switch

### Description

The 7015-4U2T-T1L Unmanaged Industrial Switch, a state-of-the-art solution for robust industrial Ethernet connectivity. With advanced features such as 4x 10BASE-T1L SPE ports and 2x 10/100BASE-TX RJ45 ports, this switch offers unparalleled flexibility for industrial control networks. Its durable aluminum case with grounding screw and IP 30 protection ensures reliability in challenging environments, complemented by a wide operating temperature range of -40 to 75°C.

The switch aligns with the IEEE 802.3cg Single Pair Ethernet (SPE) standard, enabling high-speed 10 Mbps Ethernet communications over existing fieldbus cables, extending up to 1000m - outperforming standard 100BASE-TX. Not only does the 7015-4U2T-T1L simplify cabling and reduce costs, but it also expands Industrial Ethernet applications to include new sensor, actuator, and automation scenarios. Seamlessly interoperating with existing Ethernet networks via standard CAT5/6 cabling, this switch represents a future-ready solution, empowering your industrial connectivity with efficiency and cost-effectiveness. Elevate your network infrastructure with the 7015-4U2T-T1L Unmanaged Industrial Switch today.



**RoHS**  
CE FCC



### Features Highlight

#### Reduced Wiring Complexity

The 7015-4U2T-T1L utilizes only a single pair of twisted copper wires, simplifying cable configurations and reducing installation complexity.

#### Space and Weight Savings

The smaller and lighter nature of SPE cables makes them suitable for applications where space and weight considerations are crucial, contributing to improved industrial IoT performance.

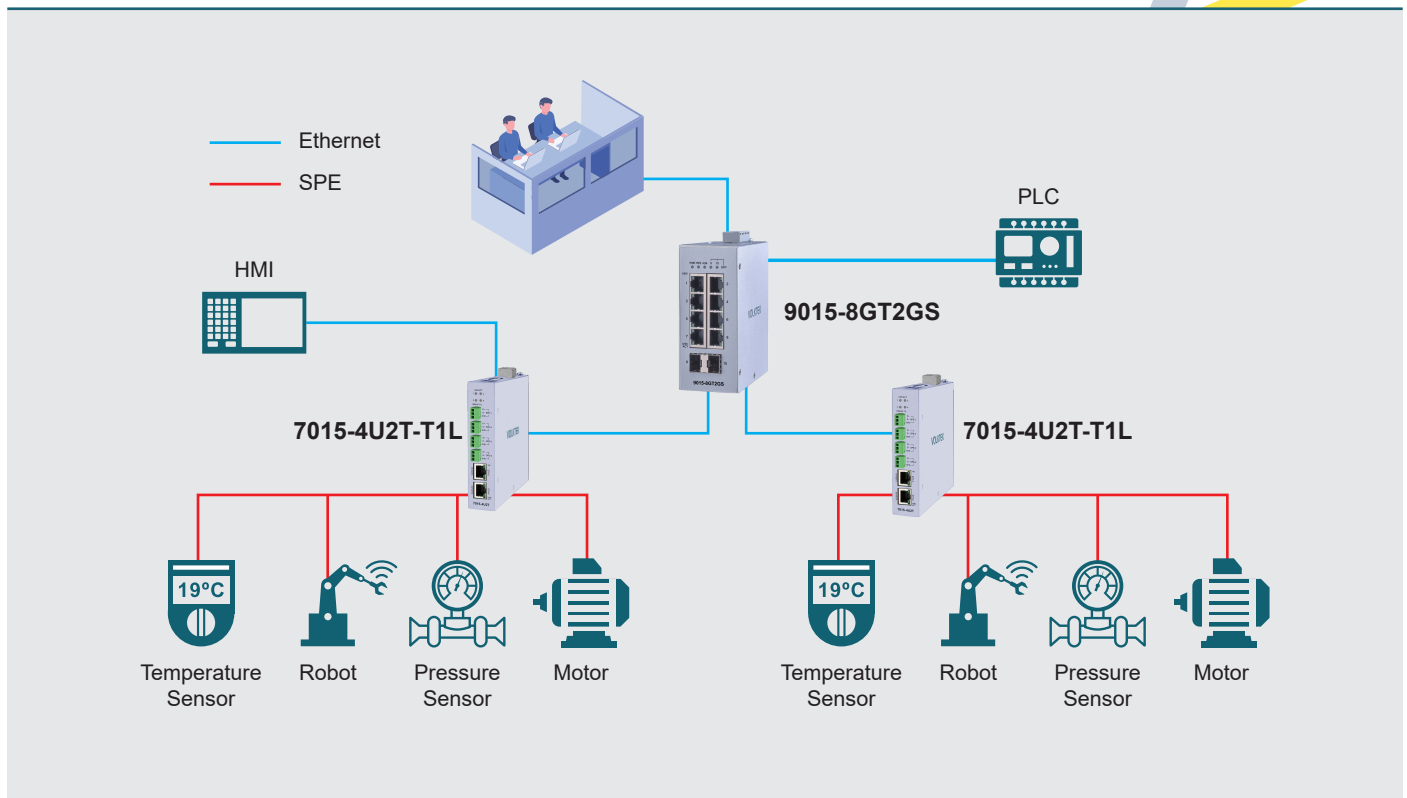
#### Ruggedized Components Designed for Harsh Industrial Environments

Built with industrial-grade components, good thermal conductivity, and enclosed in an IP30 Aluminum case, this Single Pair Ethernet Switch is resistant to extreme environments, vibration, EMI (electromagnetic interference), ESD (electrostatic discharge), power surge, over-voltage, over-current, and reverse polarity. It withstands operation at extreme temperatures between -40°C~75°C (-40°F~167°F). It follows international safety standards like CE, FCC, and ROHS for safe operation.

#### Quick and Convenient Installation with Auto-negotiation

The 7015-4U2T-T1L works as soon as it is connected and makes installation convenient. The 10/100 Mbps ports use auto MDI/MDI-X connection for auto-negotiation to work as soon as connected to other network devices at the required speed without extra software installation.

## Applications



## Specifications

Standards	
IEEE 802.3	10BASE-T 10BASE-T1L (Compliant)
IEEE 802.3u	100BASE-TX
IEEE 802.3	Nway Auto-negotiation
IEEE 802.3x	Flow Control
Interface	
Ports	2 x 10/100 BASE-TX Port 4 x 10BASE-T1L Port
DIP Switch	Auto/Manual, Master/Slave per SPE port
LED Panel	PWR, 10T1L 1~4: LNK/ACT (Green/Amber), 100TX: 100, LNK/ACT
Features	
Performance	Jumbo Frames Size: 1536Bytes
	MAC Table Entries: 1K
	Switching Fabric: 480Mbps
	Packet buffer: 512Mbit Forwarding Rate: 357.14Kpps
Power	
Input Voltage	12~48VDC
Power Consumption	4W
Mechanical and Environment	
Housing	Metal (IP30 Protection)
Operating Temperature	-40°C~75°C (-40°F~167°F)
Storage Temperature	-40°C~85°C (-40°F~185°F)
Operating Humidity	5~95% RH (non-condensing)
Storage Humidity	5~95% RH (non-condensing)
Weight	493 g
Dimension (WxHxD)	31 x 136 x 105 mm (1.22 x 5.36 x 4.13 in)

Certifications	
EMI	FCC Part 15 Subpart B Class A EN 55032 / UKCA Class A CISPR 32 Class A EN 55011 / UKCA Class A CISPR 11 Class A
	EN 61000-6-4 / UKCA VCCI Class A ICES-003 Issue 7 EN55035 / UKCA EN 61000-6-2 / UKCA EN 61000-4-2 (ESD) EN 61000-4-3 (RS) EN 61000-4-4 (EFT) EN 61000-4-5 (Surge) EN 61000-4-6 (CS) IEC 61000-4-8 (PFMF)
	Shock Test
	Freefall Test
EMS	IEC 60068-2-27
	IEC 60068-2-31
Vibration	
IEC 60068-2-6	
Ordering Information	
7015-4U2T-T1L	Unmanaged 4 x 10BASE-T1L SPE & 2 x 10/100 RJ45 Industrial SPE Switch

Note:

\* Specifications subject to change without notice.

## Dimension

